

Lower Thames Crossing
6.2 Environmental Statement
Figure 2.4 - Environmental
Masterplan Section 3 (3 of 10)
(Clean version)

APFP Regulation 5(2)(a)

Infrastructure Planning (Applications:
Prescribed Forms and Procedure)
Regulations 2009

Volume 6

DATE: December 2023
DEADLINE: 9

Planning Inspectorate Scheme Ref: TR010032
Application Document Ref: TR010032/APP/6.2

VERSION: 4.0

Revision history

Version	Date	Submitted at
1.0	31 October 2022	DCO Application
2.0	3 August 2023	Deadline 2
3.0	17 November 2023	Deadline 7
4.0	11 December 2023	Deadline 9

Lower Thames Crossing

6.2 Environmental Statement

Figure 2.4: Environmental Masterplan Section 3 (3 of 10) (Clean version)

List of contents

	Page number
Environmental Masterplan: Section 3	1
1.1 Schedule of Plans included in this application document.....	1
1.2 Section 3 (Sheets 1-10)	2
1.3 Scheme Overview.....	3
1.4 Environmental Masterplan Legend	5
1.5 Section 3.....	7

1

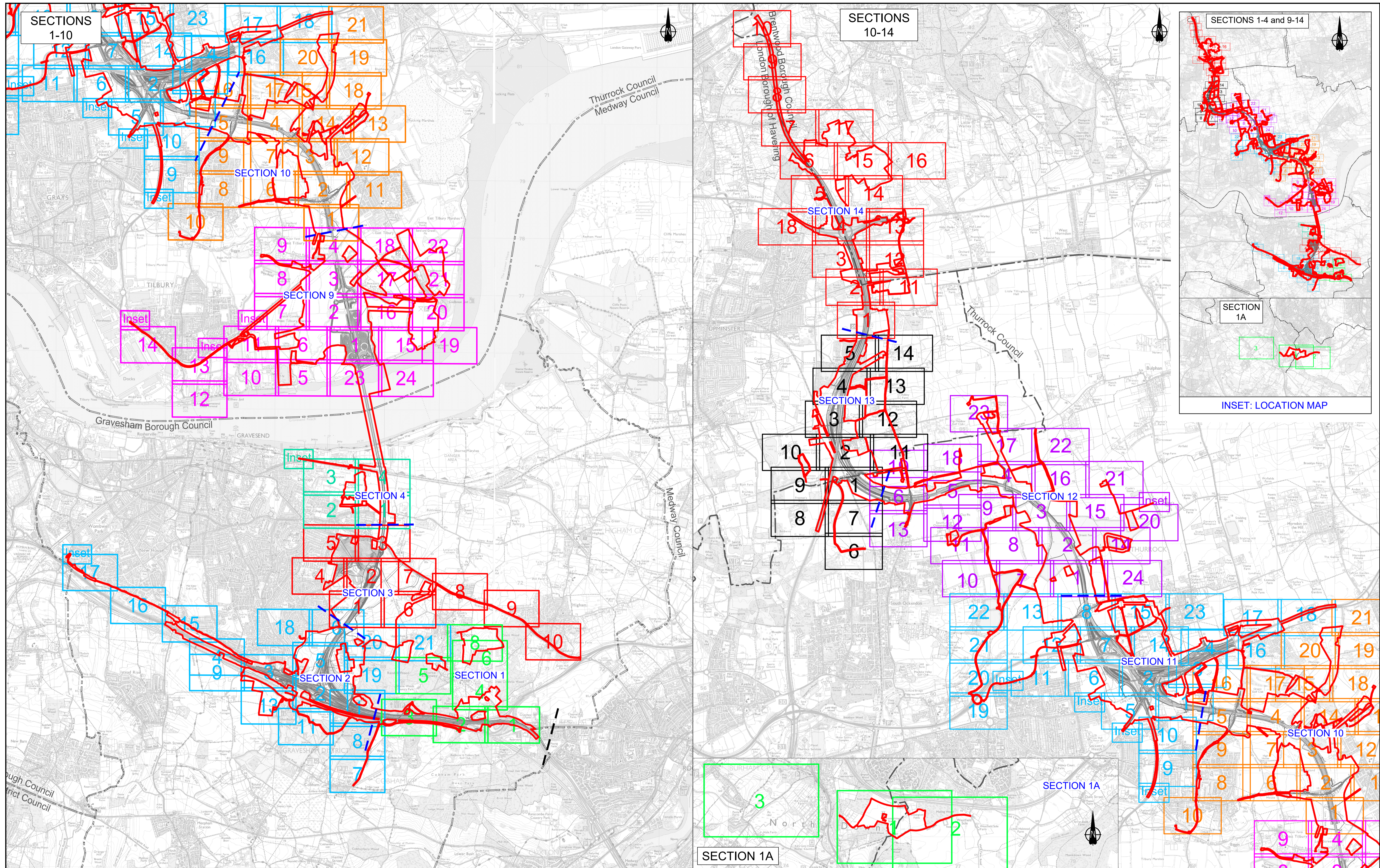
Environmental Masterplan: Section 3

1.1 Schedule of Plans included in this application document

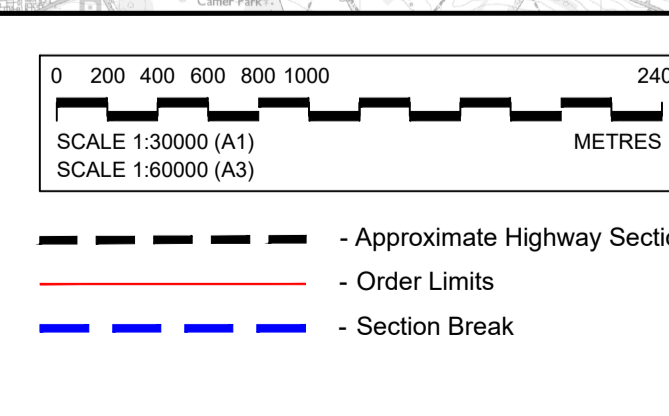
1.2 Section 3 (Sheets 1-10)

HE540039-CJV-EGN-S03_EN000000_Z-DR-ZZ- 00001 – Section 3 Overview	TR010032/APP/6.2	P04
HE540039-CJV-EGN-S03_EN000000_Z-DR-ZZ- 00002 - Section 3 Sheet 1	TR010032/APP/6.2	P04
HE540039-CJV-EGN-S03_EN000000_Z-DR-ZZ- 00003 - Section 3 Sheet 2	TR010032/APP/6.2	P03
HE540039-CJV-EGN-S03_EN000000_Z-DR-ZZ- 00004 - Section 3 Sheet 3	TR010032/APP/6.2	P03
HE540039-CJV-EGN-S03_EN000000_Z-DR-ZZ- 00005 - Section 3 Sheet 4	TR010032/APP/6.2	P02
HE540039-CJV-EGN-S03_EN000000_Z-DR-ZZ- 00006 - Section 3 Sheet 5	TR010032/APP/6.2	P02
HE540039-CJV-EGN-S03_EN000000_Z-DR-ZZ- 00007 - Section 3 Sheet 6	TR010032/APP/6.2	P02
HE540039-CJV-EGN-S03_EN000000_Z-DR-ZZ- 00008 - Section 3 Sheet 7	TR010032/APP/6.2	P02
HE540039-CJV-EGN-S03_EN000000_Z-DR-ZZ- 00009 - Section 3 Sheet 8	TR010032/APP/6.2	P02
HE540039-CJV-EGN-S03_EN000000_Z-DR-ZZ- 00010 - Section 3 Sheet 9	TR010032/APP/6.2	P02
HE540039-CJV-EGN-S03_EN000000_Z-DR-ZZ- 00012 - Section 3 Sheet 10	TR010032/APP/6.2	P02

1.3 Scheme Overview



Rev	Status	Rev. Date	Purpose of revision	Drawn	Check'd	Appr'd
P01	S2	27/10/2022		LD		
P02	S8	19/09/2023	DEADLINE 4	LD	RO	BF
P03	S8	17/11/2023	DEADLINE 7	GH1	RO	BF
P04	S8	11/12/2023	DEADLINE 9	GH1	RO	BF



Section Layout Key:	
1	Section S1 (Sheets 1 - 8)
1	Section S2 (Sheets 1 - 21)
1	Section S3 (Sheets 1 - 10)
1	Section S4 (Sheets 1 - 4)
1	Section S5 to S8: Project route in tunnel, therefore no Environmental Masterplan coverage
1	Section S9 (Sheets 1 - 24)
1	Section S10 (Sheets 1 - 21)
1	Section S11 (Sheets 1 - 22)
1	Section S12 (Sheets 1 - 24)
1	Section S13 (Sheets 1 - 14)
1	Section S14 (Sheets 1 - 18)

NOTE: Development of the Project design has resulted in the removal of some sheets forming part of the Environmental Masterplan, where acquisition of land for the Project is no longer required. In this instance, the original sheet numbering has been retained and therefore the sheet numbering shown on this Scheme Overview plan is not always consecutive.

For information, the following sheets have been omitted:

Section 1

- Sheet 7 (HE540039-CJV-EGN-S01_EN000000_Z-DR-ZZ-00008)

Section 2

- Sheet 10 (HE540039-CJV-EGN-S02_EN000000_Z-DR-ZZ-00011)
- Sheet 12 (HE540039-CJV-EGN-S02_EN000000_Z-DR-ZZ-00013)
- Sheet 14 (HE540039-CJV-EGN-S02_EN000000_Z-DR-ZZ-00015)

Client

Project

LOWER THAMES CROSSING

Status	DCO Examination	Original Size	Revision
Application Document Number	TR010032/APP/6.2	A1	P04
Drawing title	ENVIRONMENTAL MASTERPLAN SCHEME OVERVIEW		
Drawing Number	HE540039-CJV-EGN-SZZ_EN000000_Z-DR-ZZ-00002		
Scale	AS SHOWN		

1.4 Environmental Masterplan Legend

EXISTING FEATURES

General Features

- Existing WCH Route
- Overhead Power Lines

Environmental Features

- Retained Woodland, Trees and Hedges (within Order Limits)
- Retained Woodland, Trees and Hedges (outside Order Limits)
- Waterbodies / Ponds
- Watercourses
- Tree Preservation Orders Area
- Individual Tree Preservation Orders
- Veteran Tree

PROPOSED PROJECT FEATURES

- Order Limits
- Permanent Acquisition of Land

General Project Features

- Existing Overhead Power Lines to be Removed
- Indicative Diverted and Modified Overhead Power Lines
- Proposed / Improved WCH Route
- Diverted / Redesignated WCH Route
- Proposed Carriageway
- Proposed Retaining Wall
- Proposed Cutting
- Proposed Embankment
- Proposed False Cutting Earthwork (up to 4m height above carriageway level typically at 1(v) 4(h) gradient)
- Proposed Watercourse Diversion
- Proposed Attenuation Ponds
- Proposed Highway Estate Boundary Fencing
- Reinstated HS1 'Meshed' Fencing
- Proposed Security Fencing (incorporating highway boundary fence)
- Proposed Fencing Gates
- Proposed Tunnel Portal Building Outline (sub-surface)
- Proposed Highway Lighting and Gantry
- Proposed Green Bridge
- Proposed Traveller Site Replacement

General Project Features cont.

- Proposed Replacement Open Space
- Proposed Replacement Common Land
- Proposed Recreational Sites

PROPOSED LANDSCAPE ELEMENTS

Grassland (LE 1)

- LE 1.3 Species Rich Grassland
- LE 1.31 Species Rich Chalk Grassland
- LE 1.32 Species Rich Annual Wildflower Grassland
- LE 1.4 Rock and Scree

Planting (LE 2)

- LE 2.1 Woodland
- LE 2.11 Woodland With Non-Native Species
- LE 2.14 Wet / Carr Woodland
- LE 2.2 Woodland Edge
- LE 2.22 Scrub Woodland
- LE 2.4 Linear Belt of Shrubs and Trees
- LE 2.5 Shrubs With Intermittent Trees
- LE 2.7 Scattered Trees
- LE 2.8 Scrub / Scattered Scrub

Hedges (LE 4)

- LE 4.3 Native Species Hedge (untrimmed)
- LE 4.4 Native Hedgerow With Trees

Individual Trees (LE 5)

- LE 5.1 Individual Trees

Wetland Habitats (LE 6)

- LE 6.11 Water Bodies – Standing Water
- LE 6.12 Water Bodies and Associated Plants – Shallow Scrape Habitat
- LE 6.2 Banks and Ditches
- LE 6.21 Banks and Ditches – High Tide Roost Features
- LE 6.4 Wet Grassland

General Project Features cont.

- LE 6.41 Marsh and Wet Grassland – Coastal Grazing Marsh
- LE 7.2 Green Roof
- LE 7.3 Car Park
- LE 7.4 Reinforced Earth Bund

Ecological Habitats (LE 8)

- LE 8.1 Open Mosaic Habitat
- LE 8.2 Ancient Woodland Compensation Planting
- LE 8.3 Woodland Mitigation Planting
- LE 8.4 Wetland / Fenland Creation
- LE 8.5 Ecology Pond (Indicative symbol only)
- LE 8.6 Acid Grassland Soil Salvage
- LE 8.7 Nitrogen Deposition (NDEP) Compensation Area

Earthworks

- Proposed Contours

PROPOSED ENVIRONMENTAL ELEMENTS

Noise (E 1)

- E 1.2 Acoustic Barrier-Built Elements (typically incorporating highway boundary fence)

Water (E 2)

- Flood Compensation Areas (E2-FCA)
- Flood Defence (E2-FD)

Ecological (E 3)

- E 3.2 Ecological Habitat Creation and Receptor Sites for Protected Species
- E 3.2 Ecological Protection Measures – Dormouse Boxes
- E 3.2 Ecological Protection Measures – Bat / Bird Boxes
- E 3.2 Ecological Protection Measures – Ecological Culvert
- E 3.2 Ecological Protection Measures – Bat Barn Block
- E 3.2 Ecological Protection Measures – Ecological Fencing (incorporating highway boundary fence)

NOTES:

Land Reinstatement

The Environmental Masterplan is intended to show the permanent landscaping and environmental mitigation features that are embedded in the operational design. Land temporarily impacted by construction would be reinstated to its former condition and composition upon completion, as far as reasonably practicable and as provided for in DCO Article 35, unless otherwise shown in the Environmental Masterplan.

WCH Terminology and Route Information

The term 'WCH Routes' (which includes Public Rights of Way) refers to routes for walkers, cyclists and horse riders and is used in the broad sense within the Environmental Masterplan to refer to routes intended for at least one (but not necessarily more than one) of those users. For further information, please refer to the Rights of Way and Access Plans (Application Document 2.7) and the draft Development Consent Order (Application Document 3.1).

Veteran Trees

Veteran trees shown on the Environmental Masterplan include those identified in the Ancient Tree Inventory and project-identified potential ancient or veteran trees.

Outline Landscape and Ecological Management Plan

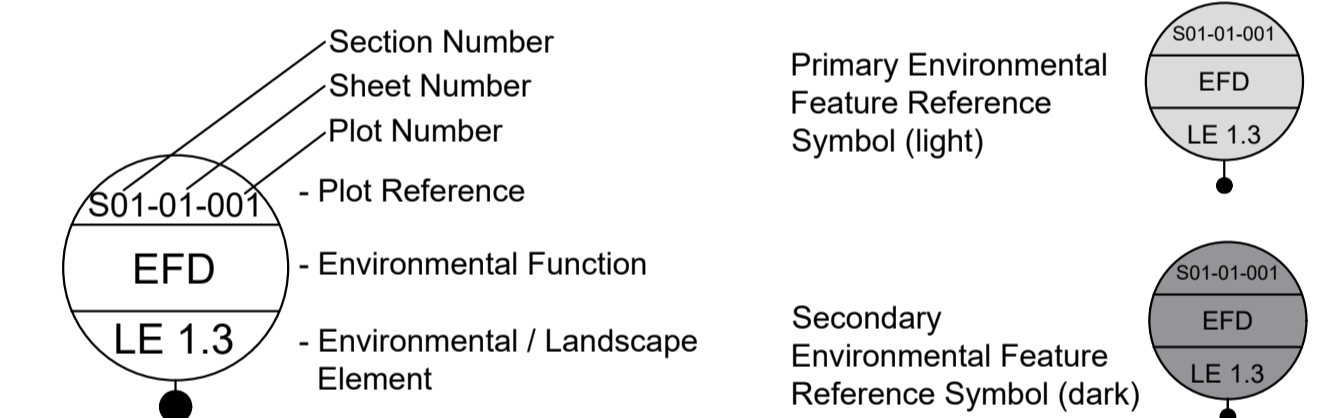
The outline Landscape and Ecology Management Plan (LEMP) separately sets out the proposed management for the environmental / landscape elements shown on the Environmental Masterplan. The Environment Masterplan secures the spatial extent and location of the environmental / landscape elements detailed within the outline LEMP. The outline LEMP details the management regimes, management expectations and monitoring requirements for the proposals in each land parcel shown on the Environmental Masterplan. It focuses on the management requirements for land parcels to be permanently acquired within the Order Limits and which perform specific landscape and ecological mitigation functions for the Project. For further detail regarding management requirements and principles, please refer to the outline LEMP (Application Document 6.7).

Existing WCH Routes

Existing WCH route information is based on Local Authority data. For further details, please refer to the relevant Local Authority Definitive Public Right of Way Map and Statement.

Environmental Feature Reference Symbol

An Environmental Feature Reference Symbol is provided for each environmental / landscape element. This contains a Plot Reference, the Environmental Function and the specific Landscape / Environmental Element. The Plot Reference is unique to each element labelled, and comprises the Section number, Sheet number and unique Plot number. Additional Environmental Feature Reference Symbols have been attributed to elements which span more than one page. The differences between the initial (Primary) Environmental Feature Reference Symbol and any additional (Secondary) versions are shown below.



Environmental Functions (EF)

- EFA Visual Screening
- EFB Landscape Integration
- EFC Enhancing the Built Environment
- EFD Nature Conservation and Biodiversity
- EFE Visual Amenity
- EFF Heritage
- EFG Auditory Amenity
- EFH Water Quality
- EFJ Agricultural / Highway Boundary
- EFK Access

Project Design Report

For further detail on the Landscape Design and Special Category Land shown within these plans, as well as the associated background and approach, please refer to the Project Design Report, Volume 2 Book of Plans, and Design Principles document (Application Documents 7.4, 6.2 and 7.5 respectively).

Contains Ordnance Survey data. © Crown copyright and database rights 2023. Ordnance Survey 100030649

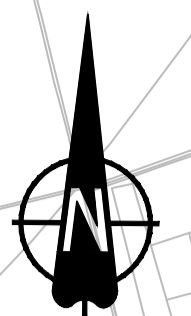
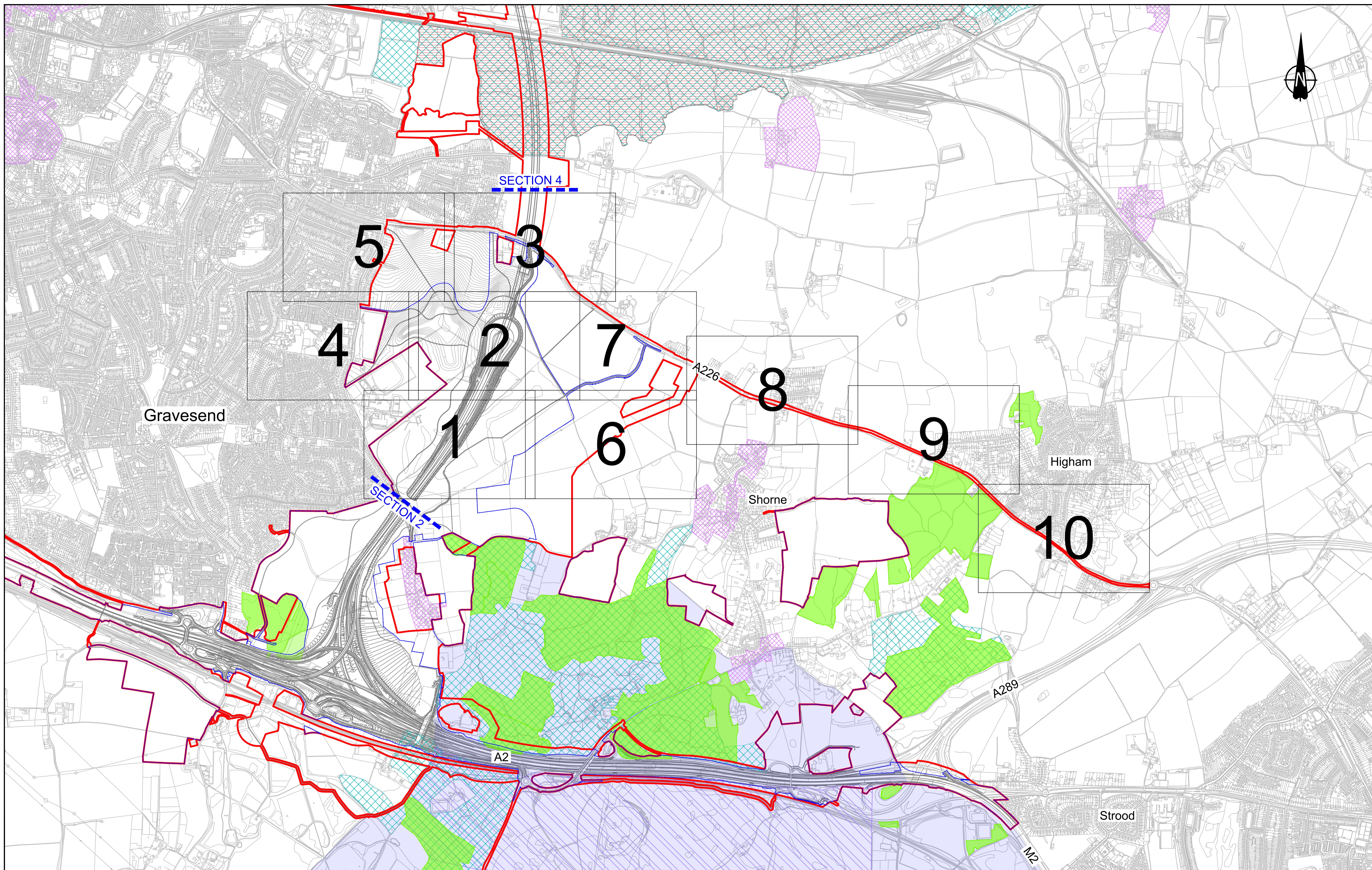
P01	S2	27/10/2022	LD
P02	S8	11/12/2023	Deadline 9 GH1 RO BF
Rev	Status	Rev. Date	Purpose of revision
			Drawn
			Check'd
			Apprv'd

Client:

Project: LOWER THAMES CROSSING

Status	DCO Examination	Original Size	A1	Revision	P02
Application Document Number	TR010032/APP/6.2	Scale	AS SHOWN		
Drawing title	ENVIRONMENTAL MASTERPLAN LEGEND				
Drawing Number	HE540039-CJV-EGN-SZZ_EN000000_Z-DR-ZZ-00001				

1.5 Section 3



Contains Ordnance Survey data. © Crown copyright and database rights 2023. Ordnance Survey 100030649

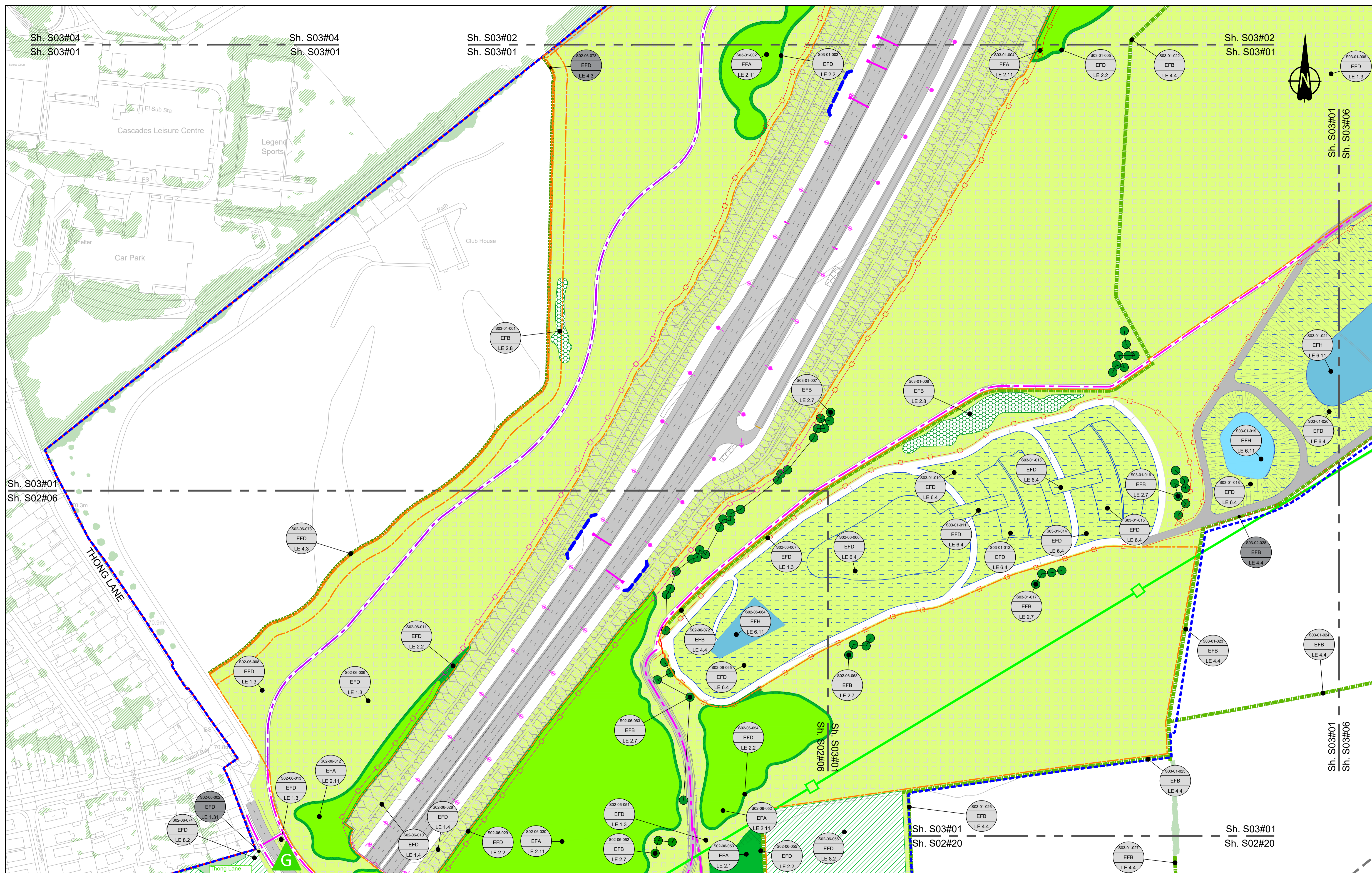
0	100	200	300	400	500	600	700	800	900	1000
METRES										
SCALE 1:10000 (A1)										
SCALE 1:25000 (A3)										
PO1	S2	25/10/2022	DCO APPLICATION	LD	PS	MH				
PO2	S8	03/08/2023	Deadline 2	PS	SK	BF				
PO3	S8	17/11/2023	Deadline 7	GH1	RO	BB				
PO4	S8	11/12/2023	Deadline 9	GH1	RO	BF				
Rev	Status	Rev. Date	Purpose of revision	Drawn	Chk'd	Appr'd				

LEGEND

- Order Limits
- Registered Parks and Gardens
- Permanent Acquisition of Land
- Ramsar Sites
- Area of Outstanding National Beauty (AONB)
- Ancient Woodland
- Site of Special Scientific Interest (SSSI)
- Conservation Area

Client
 national highways
 Project
LOWER THAMES CROSSING

Status	DCO Examination	Original Size	Revision
Application Document Number	TR010032/APP/6.2	A1	P04
Drawing title	ENVIRONMENTAL MASTERPLAN OVERVIEW PLAN SECTION 3		
Drawing Number	HE540039-CJV-EGN-S03_EN000000_Z-DR-ZZ-00001		



Contains Ordnance Survey data. © Crown copyright and database rights 2023. Ordnance Survey 100030649

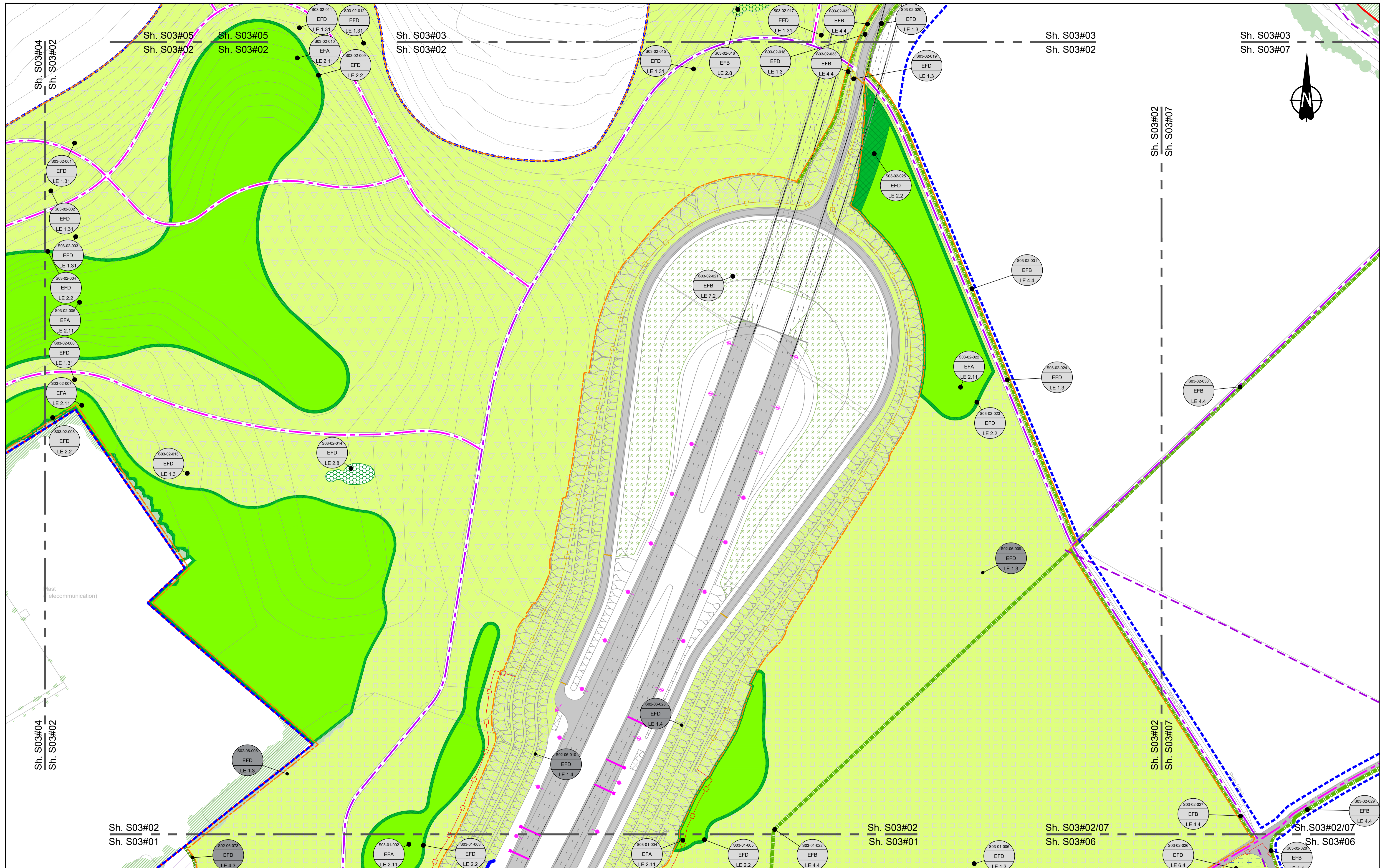
SCALE 1:1250 (A1)
SCALE 1:2500 (A3)

Section Overview Sheet. Refer to section overview plan at the start of the section.

Rev	Status	Rev. Date	Purpose of revision	Drawn	Chk'd	Appr'd
P01	S2	25/10/2022		LD	SK	BF
P02	S8	03/08/2023	Deadline 2	LD	GH1	RO
P03	S8	17/11/2023	Deadline 7	LD	GH1	RO
P04	S8	11/12/2023	Deadline 9	LD	GH1	RO

Environmental Mitigation Legend: Refer to Main Legend for baseline and scheme features (Dwg: HE540039-CJV-EGN-SZZ_EN000000_Z-DR-ZZ-00001)	
Order Limits	Planting (LE 2)
Permanent Acquisition of Land	Grassland (LE 1)
LE 1.3 Species Rich Grassland	LE 2.1 Woodland
LE 1.31 Species Rich Chalk Grassland	LE 2.11 Woodland With Non-Native Species
LE 1.32 Species Rich Annual Wildflower Grassland	LE 2.14 Wet / Carr Woodland
LE 1.4 Rock and Scree	LE 2.2 Woodland Edge
LE 1.4 Native Hedgerow With Trees	LE 2.22 Scrub Woodland
LE 1.4 Native Hedgerow With Trees	LE 2.4 Linear Belt of Shrubs and Trees
LE 1.3 Scattered Trees	LE 2.5 Shrubs With Intermittent Trees
LE 1.31 Scattered Trees	LE 2.7 Scattered Trees
LE 1.32 Scattered Trees	LE 2.8 Scrub / Scattered Scrub
LE 1.33 Scattered Trees	LE 2.8 Scrub / Scattered Scrub
LE 1.34 Scattered Trees	LE 2.8 Scrub / Scattered Scrub
LE 1.35 Scattered Trees	LE 2.8 Scrub / Scattered Scrub
LE 1.36 Scattered Trees	LE 2.8 Scrub / Scattered Scrub
LE 1.37 Scattered Trees	LE 2.8 Scrub / Scattered Scrub
LE 1.38 Scattered Trees	LE 2.8 Scrub / Scattered Scrub
LE 1.39 Scattered Trees	LE 2.8 Scrub / Scattered Scrub
LE 1.40 Scattered Trees	LE 2.8 Scrub / Scattered Scrub
LE 1.41 Scattered Trees	LE 2.8 Scrub / Scattered Scrub
LE 1.42 Scattered Trees	LE 2.8 Scrub / Scattered Scrub
LE 1.43 Scattered Trees	LE 2.8 Scrub / Scattered Scrub
LE 1.44 Scattered Trees	LE 2.8 Scrub / Scattered Scrub
LE 1.45 Scattered Trees	LE 2.8 Scrub / Scattered Scrub
LE 1.46 Scattered Trees	LE 2.8 Scrub / Scattered Scrub
LE 1.47 Scattered Trees	LE 2.8 Scrub / Scattered Scrub
LE 1.48 Scattered Trees	LE 2.8 Scrub / Scattered Scrub
LE 1.49 Scattered Trees	LE 2.8 Scrub / Scattered Scrub
LE 1.50 Scattered Trees	LE 2.8 Scrub / Scattered Scrub
LE 1.51 Scattered Trees	LE 2.8 Scrub / Scattered Scrub
LE 1.52 Scattered Trees	LE 2.8 Scrub / Scattered Scrub
LE 1.53 Scattered Trees	LE 2.8 Scrub / Scattered Scrub
LE 1.54 Scattered Trees	LE 2.8 Scrub / Scattered Scrub
LE 1.55 Scattered Trees	LE 2.8 Scrub / Scattered Scrub
LE 1.56 Scattered Trees	LE 2.8 Scrub / Scattered Scrub
LE 1.57 Scattered Trees	LE 2.8 Scrub / Scattered Scrub
LE 1.58 Scattered Trees	LE 2.8 Scrub / Scattered Scrub
LE 1.59 Scattered Trees	LE 2.8 Scrub / Scattered Scrub
LE 1.60 Scattered Trees	LE 2.8 Scrub / Scattered Scrub
LE 1.61 Scattered Trees	LE 2.8 Scrub / Scattered Scrub
LE 1.62 Scattered Trees	LE 2.8 Scrub / Scattered Scrub
LE 1.63 Scattered Trees	LE 2.8 Scrub / Scattered Scrub
LE 1.64 Scattered Trees	LE 2.8 Scrub / Scattered Scrub
LE 1.65 Scattered Trees	LE 2.8 Scrub / Scattered Scrub
LE 1.66 Scattered Trees	LE 2.8 Scrub / Scattered Scrub
LE 1.67 Scattered Trees	LE 2.8 Scrub / Scattered Scrub
LE 1.68 Scattered Trees	LE 2.8 Scrub / Scattered Scrub
LE 1.69 Scattered Trees	LE 2.8 Scrub / Scattered Scrub
LE 1.70 Scattered Trees	LE 2.8 Scrub / Scattered Scrub
LE 1.71 Scattered Trees	LE 2.8 Scrub / Scattered Scrub
LE 1.72 Scattered Trees	LE 2.8 Scrub / Scattered Scrub
LE 1.73 Scattered Trees	LE 2.8 Scrub / Scattered Scrub
LE 1.74 Scattered Trees	LE 2.8 Scrub / Scattered Scrub
LE 1.75 Scattered Trees	LE 2.8 Scrub / Scattered Scrub
LE 1.76 Scattered Trees	LE 2.8 Scrub / Scattered Scrub
LE 1.77 Scattered Trees	LE 2.8 Scrub / Scattered Scrub
LE 1.78 Scattered Trees	LE 2.8 Scrub / Scattered Scrub
LE 1.79 Scattered Trees	LE 2.8 Scrub / Scattered Scrub
LE 1.80 Scattered Trees	LE 2.8 Scrub / Scattered Scrub
LE 1.81 Scattered Trees	LE 2.8 Scrub / Scattered Scrub
LE 1.82 Scattered Trees	LE 2.8 Scrub / Scattered Scrub
LE 1.83 Scattered Trees	LE 2.8 Scrub / Scattered Scrub
LE 1.84 Scattered Trees	LE 2.8 Scrub / Scattered Scrub
LE 1.85 Scattered Trees	LE 2.8 Scrub / Scattered Scrub
LE 1.86 Scattered Trees	LE 2.8 Scrub / Scattered Scrub
LE 1.87 Scattered Trees	LE 2.8 Scrub / Scattered Scrub
LE 1.88 Scattered Trees	LE 2.8 Scrub / Scattered Scrub
LE 1.89 Scattered Trees	LE 2.8 Scrub / Scattered Scrub
LE 1.90 Scattered Trees	LE 2.8 Scrub / Scattered Scrub
LE 1.91 Scattered Trees	LE 2.8 Scrub / Scattered Scrub
LE 1.92 Scattered Trees	LE 2.8 Scrub / Scattered Scrub
LE 1.93 Scattered Trees	LE 2.8 Scrub / Scattered Scrub
LE 1.94 Scattered Trees	LE 2.8 Scrub / Scattered Scrub
LE 1.95 Scattered Trees	LE 2.8 Scrub / Scattered Scrub
LE 1.96 Scattered Trees	LE 2.8 Scrub / Scattered Scrub
LE 1.97 Scattered Trees	LE 2.8 Scrub / Scattered Scrub
LE 1.98 Scattered Trees	LE 2.8 Scrub / Scattered Scrub
LE 1.99 Scattered Trees	LE 2.8 Scrub / Scattered Scrub
LE 2.00 Scattered Trees	LE 2.8 Scrub / Scattered Scrub

	Client	DCO Examination	Original Size	A1	Revision	P04
	Project	Application Document Number	TR010032/APP/6.2	Scale	1:1250	
LOWER THAMES CROSSING		Drawing title	ENVIRONMENTAL MASTERPLAN SECTION 3 SHEET 1			
		Drawing Number	HE540039-CJV-EGN-S03_EN000000_Z-DR-ZZ-00002			
		HE540039-CJV-EGN-S03_EN000000_Z-DR-ZZ-00002.dwg				



Contains Ordnance Survey data. © Crown copyright and database rights 2023. Ordnance Survey 100030649

0 10 20 30 40 50 60 70 80 90 100 METRES

SCALE 1:1250 (A1)
SCALE 1:2500 (A3)

Section Overview Sheet: Refer to section overview plan at the start of the section.

P01	S2	25/10/2022	LD		
P02	S8	03/08/2023	Deadline 2	PS	SK
P03	S8	11/12/2023	Deadline 9	GH1	RO

Rev	Status	Rev. Date	Purpose of revision	Drawn	Check'd	Apprv'd
-----	--------	-----------	---------------------	-------	---------	---------

Environmental Mitigation Legend: Refer to Main Legend for baseline and scheme features (Dwg: HE540039-CJV-EGN-SZZ_EN000000_Z-DR-ZZ-00001).

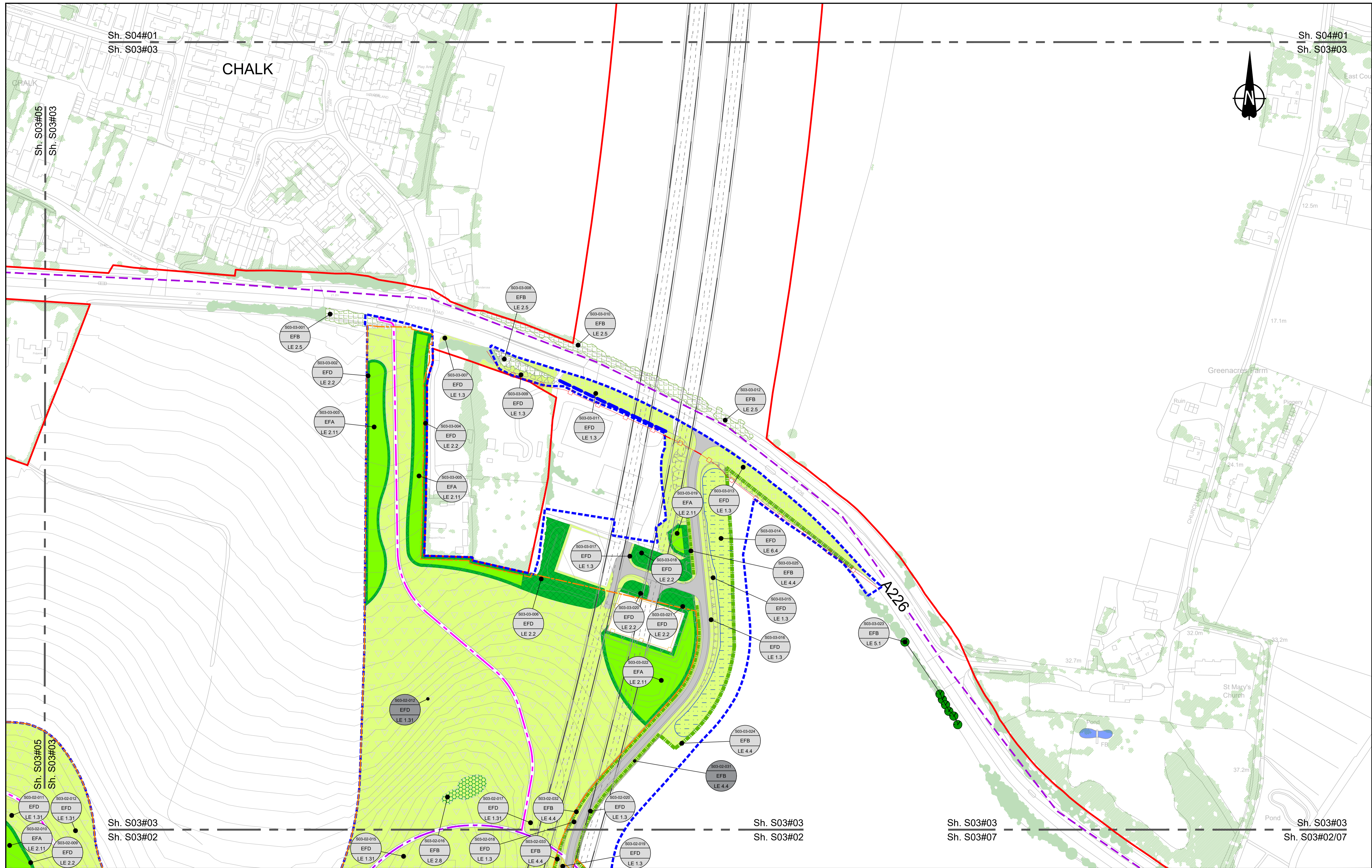
<p>Order Limits</p> <p>Permanent Acquisition of Land</p> <p>Grassland (LE 1)</p> <p>LE 1.3 Species Rich Grassland</p> <p>LE 1.31 Species Rich Chalk Grassland</p> <p>LE 1.32 Species Rich Annual Wildflower Grassland</p> <p>LE 1.4 Rock and Scree</p>	<p>Planting (LE 2)</p> <p>LE 2.1 Woodland</p> <p>LE 2.11 Woodland With Non-Native Species</p> <p>LE 2.14 Wet / Carr Woodland</p> <p>LE 2.2 Woodland Edge</p> <p>LE 2.22 Scrub Woodland</p> <p>LE 2.4 Linear Belt of Shrubs and Trees</p> <p>LE 2.5 Shrubs With Intermittent Trees</p> <p>LE 2.7 Scattered Trees</p> <p>LE 2.8 Scrub / Scattered Scrub</p> <p>Hedges (LE 4)</p> <p>LE 4.3 Native Species Hedge (untrimmed)</p> <p>LE 4.4 Native Hedgerow With Trees</p>	<p>Individual Trees (LE 5)</p> <p>LE 5.1 Individual Trees</p> <p>Wetland Habitats (LE 6)</p> <p>LE 6.11 Water Bodies - Standing Water</p> <p>LE 6.12 Water Bodies and Associated Plants - Shallow Scrape</p> <p>LE 6.2 Banks and Ditches</p> <p>LE 6.21 Banks and Ditches - High Tide Roost Features</p> <p>LE 6.4 Wet Grassland</p> <p>LE 6.41 Marsh and Wet Grassland - Coastal Grazing Marsh</p> <p>Hard Landscape Features (LE 7)</p> <p>LE 7.4 Reinforced Earth Bund</p> <p>Earthworks</p> <p>Proposed Contours</p>	<p>Ecological Habitats (LE 8)</p> <p>LE 8.1 Open Mosaic Habitat</p> <p>LE 8.2 Ancient Woodland Compensation Planting</p> <p>LE 8.3 Woodland Mitigation Planting</p> <p>LE 8.4 Wetland / Fenland Creation</p> <p>LE 8.5 Ecology Pond (indicative symbol only)</p> <p>LE 8.6 Acid Grassland Soil Salvage</p>	<p>Noise (E 1)</p> <p>E 1.2 Acoustic Barrier-Built Elements (typically inc. highway boundary fence)</p> <p>Water (E 2)</p> <p>Flood Compensation Areas (E 2-FCA)</p> <p>Flood Defence (E 2-FD)</p> <p>LE 8.7 Nitrogen Deposition (NDEP) Compensation Area</p>	<p>Ecological (E 3)</p> <p>E 3.2 Ecological Habitat Creation and Receptor sites for Protected Species</p> <p>E 3.2 Dormouse Boxes</p> <p>E 3.2 Bat Boxes</p> <p>E 3.2 Ecological Culvert</p> <p>E 3.2 Bat Barn Block</p> <p>E 3.2 Ecological Fencing (inc. highway boundary fence)</p> <p>E 3.2 Barn Owl Box</p>
--	--	--	---	---	---

Client: **national highways**

Project: **LOWER THAMES CROSSING**

Status	DCO Examination	Original Size	A1	Revision	P03
Application Document Number	TR010032/APP/6.2	Scale	1:1250		
Drawing title	ENVIRONMENTAL MASTERPLAN SECTION 3 SHEET 2				
Drawing Number	HE540039-CJV-EGN-S03_EN000000_Z-DR-ZZ-00003				

HE540039-CJV-EGN-S03_EN000000_Z-DR-ZZ-00003.dwg



Contains Ordnance Survey data. © Crown copyright and database rights 2023. Ordnance Survey 100030649

0 10 20 30 40 50 60 70 80 90 100 METRES

SCALE 1:1250 (A1)
SCALE 1:2500 (A3)

Section Overview Sheet: Refer to section overview plan at the start of the section.

P01	S2	27/10/2022	DCO Application	SA	PS	MH
P02	S8	03/08/2023	Deadline 2	PS	SK	BF
P03	S8	11/12/2023	Deadline 9	GH1	RO	BF

Rev	Status	Rev. Date	Purpose of revision	Drawn	Chkd	Apprv'd

Environmental Mitigation Legend: Refer to Main Legend for baseline and scheme features (Dwg: HE540039-CJV-EGN-SZZ_EN000000_Z-DR-ZZ-00001).

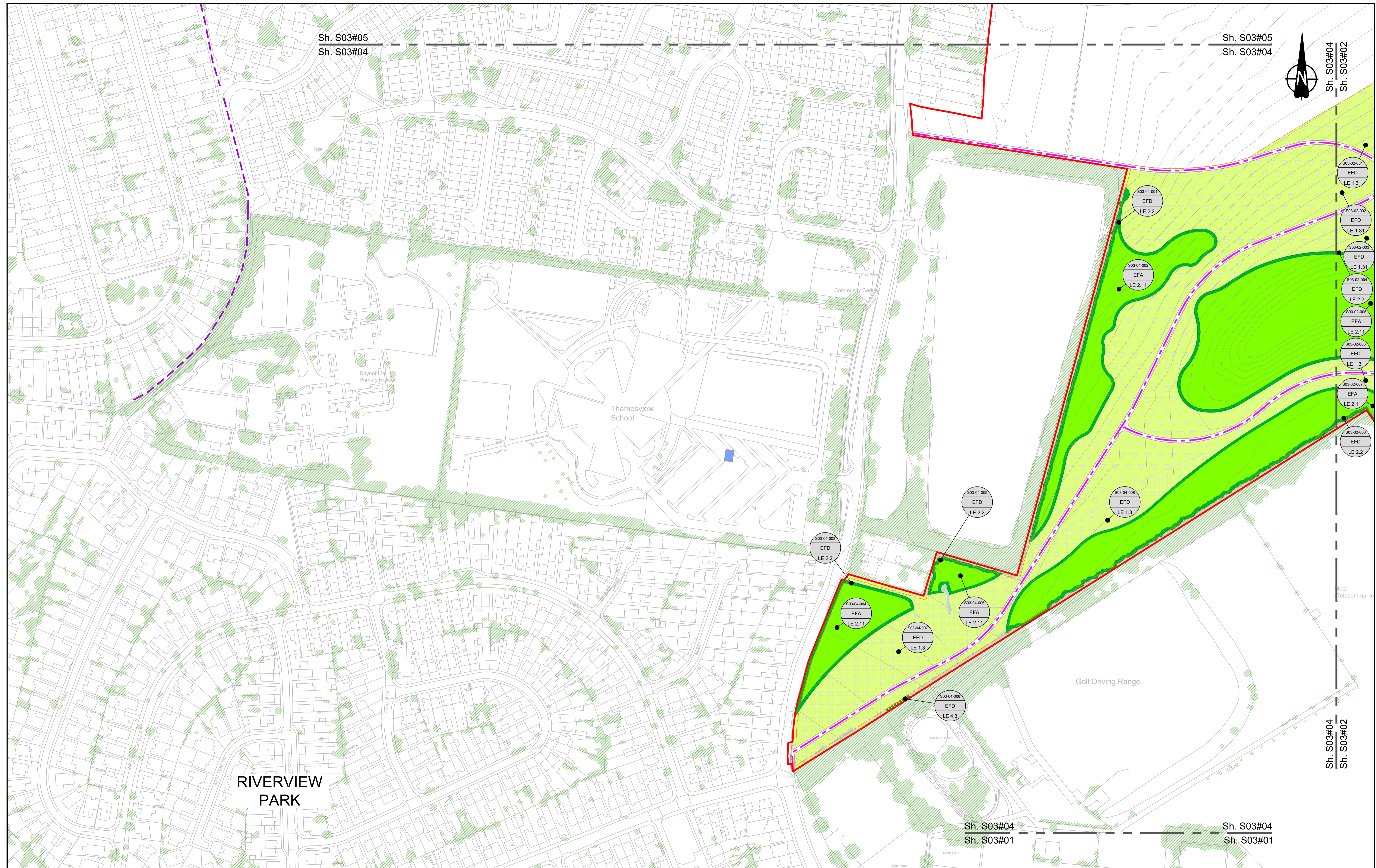
Order Limits	Planting (LE 2)	Individual Trees (LE 5)	Ecological Habitats (LE 8)	Noise (E 1)	Ecological (E 3)
Permanent Acquisition of Land	LE 2.1 Woodland	LE 5.1 Individual Trees	LE 8.1 Open Mosaic Habitat	LE 1.2 Acoustic Barrier-Built Elements (typically inc. highway boundary fence)	E 3.2 Ecological Habitat Creation and Receptor sites for Protected Species
Grassland (LE 1)	LE 2.11 Woodland With Non-Native Species	Wetland Habitats (LE 6)	LE 8.2 Ancient Woodland Compensation Planting	E 1.2 Acoustic Barrier-Built Elements (typically inc. highway boundary fence)	E 3.2 Dormouse Boxes
LE 1.3 Species Rich Grassland	LE 2.14 Wet / Carr Woodland	LE 6.1 Marsh and Wet Grassland-Coastal Grazing Marsh	LE 8.3 Woodland Mitigation Planting	E 3.2 Bat Boxes	E 3.2 Ecological Culvert
LE 1.31 Species Rich Chalk Grassland	LE 2.2 Woodland Edge	LE 6.2 Water Bodies and Associated Plants-Shallow Scrape	LE 8.4 Wetland / Fenland Creation	E 3.2 Bat Boxes	E 3.2 Ecological Culvert
LE 1.32 Species Rich Annual Wildflower Grassland	LE 2.22 Scrub Woodland	LE 6.2 Banks and Ditches	LE 8.5 Ecology Pond (indicative symbol only)	E 3.2 Bat Boxes	E 3.2 Bat Block
LE 1.4 Rock and Scree	LE 2.4 Linear Belt of Shrubs and Trees	LE 6.4 Wet Grassland	LE 8.6 Acid Grassland Soil Salvage	E 3.2 Ecological Fencing (inc. highway boundary fence)	E 3.2 Ecological Fencing (inc. highway boundary fence)
LE 2.5 Shrubs With Intermittent Trees	LE 2.7 Scattered Trees	LE 6.41 Marsh and Wet Grassland-Coastal Grazing Marsh	Hard Landscape Features (LE 7)	E 3.2 Ecological Fencing (inc. highway boundary fence)	E 3.2 Ecological Fencing (inc. highway boundary fence)
LE 2.8 Scrub / Scattered Scrub	LE 4.3 Native Species Hedge (untrimmed)	LE 7.4 Reinforced Earth Bund	Earthworks	E 3.2 Ecological Fencing (inc. highway boundary fence)	E 3.2 Ecological Fencing (inc. highway boundary fence)
LE 4.4 Native Hedgerow With Trees	LE 4.4 Native Hedgerow With Trees	LE 7.4 Reinforced Earth Bund	Proposed Contours	E 3.2 Ecological Fencing (inc. highway boundary fence)	E 3.2 Ecological Fencing (inc. highway boundary fence)

Client: national highways

Project: LOWER THAMES CROSSING

Status	DCO Examination	Original Size	A1	Revision	P03
Application Document Number	TR010032/APP/6.2	Scale	1:1250		
Drawing Title	ENVIRONMENTAL MASTERPLAN SECTION 3 SHEET 3				
Drawing Number	HE540039-CJV-EGN-S03_EN000000_Z-DR-ZZ-00004				

HE540039-CJV-EGN-S03_EN000000_Z-DR-ZZ-00004.dwg



Contains Ordnance Survey data. © Crown copyright and database rights 2023. Ordnance Survey 100030649

0 10 20 30 40 50 60 70 80 90 100 METRES

SCALE 1:1250 (A1)
SCALE 1:2500 (A3)

Section Overview Sheet: Refer to section overview plan at the start of the section.

P01	S2	25/10/2022	LD
P02	S8	11/12/2023	Deadline 9
Rev	Status	Rev. Date	Purpose of revision
	Drawn	Chk'd	Apprv'd

Environmental Mitigation Legend: Refer to Main Legend for baseline and scheme features (Dwg: HE540039-CJV-EGN-SZZ_EN000000_Z-DR-ZZ-00001).

Order Limits	Planting (LE 2)	Individual Trees (LE 5)
Order Limits	LE 2.1 Woodland	LE 5.1 Individual Trees
Permanent Acquisition of Land	LE 2.11 Woodland with Non-Native Species	Wetland Habitats (LE 6)
Grassland (LE 1)	LE 2.14 Wet / Carr Woodland	LE 6.1 Water Bodies - Coastal Grazing Marsh
LE 1.3 Species Rich Grassland	LE 2.2 Woodland Edge	LE 6.11 Water Bodies - Standing Water
LE 1.31 Species Rich Chalk Grassland	LE 2.22 Scrub Woodland	LE 6.2 Banks and Ditches
LE 1.32 Species Rich Annual Wildflower Grassland	LE 2.4 Linear Belt of Shrubs and Trees	LE 6.21 Banks and Ditches - High Tide Roost Features
LE 1.4 Rock and Scree		Hard Landscape Features (LE 7)
		LE 7.4 Reinforced Earth Bund
		Earthworks
		Proposed Contours

Ecological Habitats (LE 8)	Ecological (E 3)	Ecological (E 3)
LE 8.1 Open Mosaic Habitat	E 3.2 Ecological Habitat Creation and Receptor sites for Protected Species	E 3.2 Ecological Fencing (inc. highway boundary fence)
LE 8.2 Ancient Woodland Compensation Planting	E 3.2 Dormouse Boxes	E 3.2 Bat Boxes
LE 8.3 Woodland Mitigation Planting	E 3.2 Bat Boxes	E 3.2 Ecological Culvert
LE 8.4 Wetland / Fenland Creation	E 3.2 Bat Barn Block	
LE 8.5 Ecology Pond (indicative symbol only)		
LE 8.6 Acid Grassland Soil Salvage		
Noise (E 1)		
E 1.2 Acoustic Barrier-Built Elements (typically inc. highway boundary fence)		
Water (E 2)		
Flood Compensation Areas (E 2-FCAs)		
Flood Defence (E 2-FD)		
LE 7.7 Nitrogen Deposition (NDEP) Compensation Area		
E 1.2 Acoustic Barrier-Built Elements (typically inc. highway boundary fence)		
Flood Compensation Areas (E 2-FCAs)		
Flood Defence (E 2-FD)		

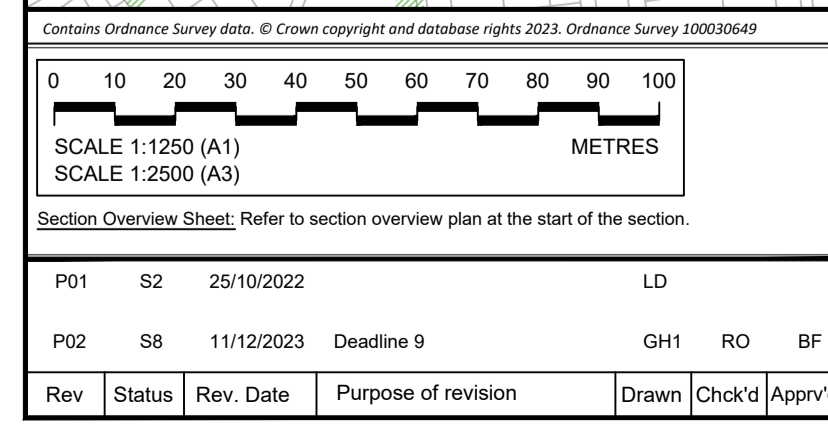
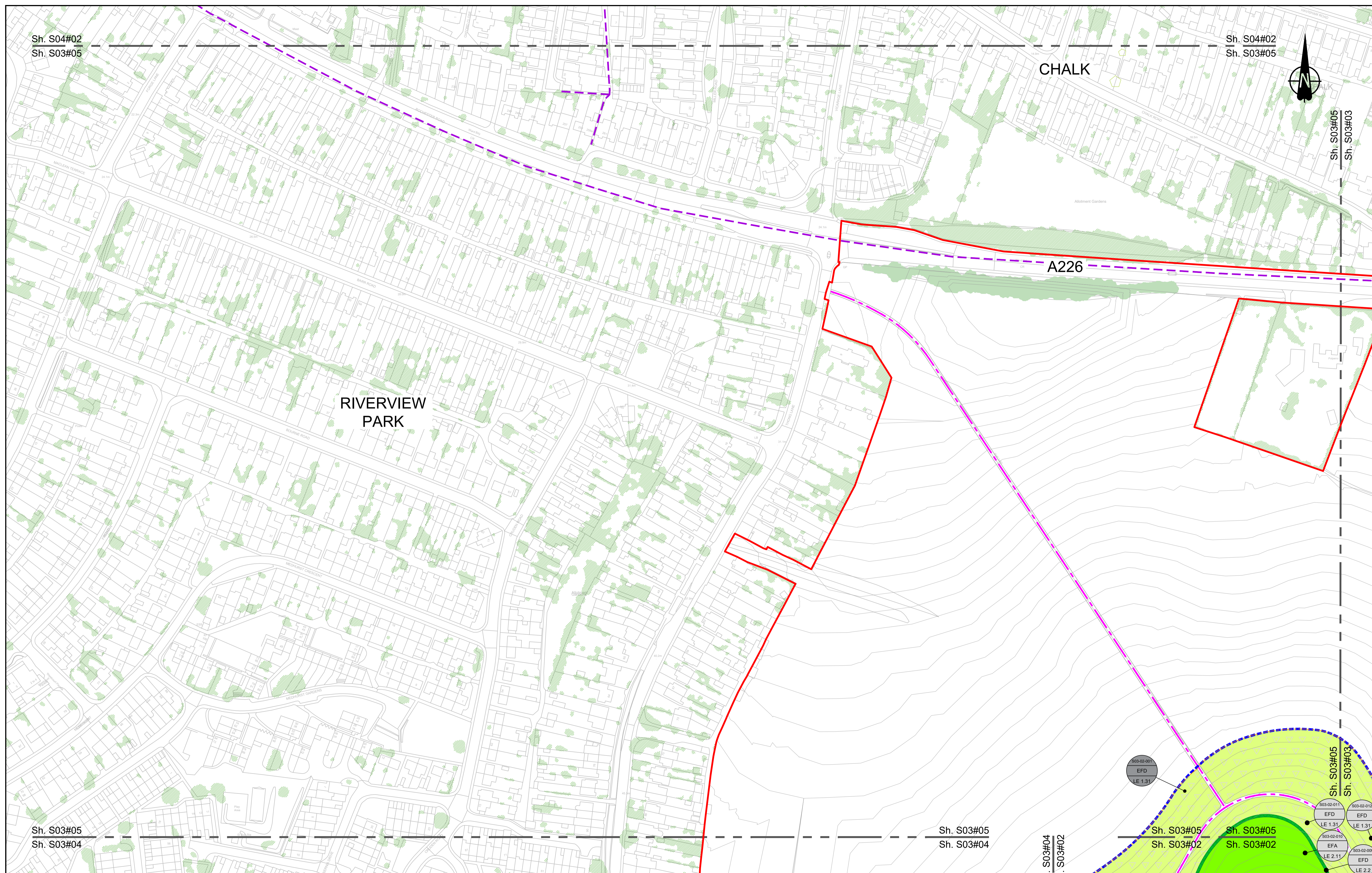
Client

Project

LOWER THAMES CROSSING

Status	DCO Examination	Original Size	Revision
Application Document Number	TR010032/APP/6.2	A1	P02
Drawing title	ENVIRONMENTAL MASTERPLAN SECTION 3 SHEET 4		
Drawing Number	HE540039-CJV-EGN-S03_EN000000_Z-DR-ZZ-00005		

HE540039-CJV-EGN-S03_EN000000_Z-DR-ZZ-00005.dwg



Contains Ordnance Survey data. © Crown copyright and database rights 2023. Ordnance Survey 100030649

Environmental Mitigation Legend: Refer to Main Legend for baseline and scheme features (Dwg: HE540039-CJV-EGN-SZZ_EN000000_Z-DR-ZZ-00001).

Order Limits	Planting (LE 2)	LE 2.5 Shrubs With Intermittent Trees	Individual Trees (LE 5)	LE 6.4 Wet Grassland
Permanent Acquisition of Land	LE 2.11 Woodland	LE 2.1 Woodland With Non-Native Species	LE 5.1 Individual Trees	LE 6.41 Marsh and Wet Grassland Coastal Grazing Marsh
Grassland (LE 1)	LE 2.14 Wet / Carr Woodland	LE 2.2 Woodland Edge	Wetland Habitats (LE 6)	LE 6.11 Water Bodies - Standing Water
LE 1.3 Species Rich Grassland	LE 2.22 Scrub Woodland	LE 1.31 Species Rich Chalk Grassland	LE 6.2 Scrub / Scattered Scrub	LE 6.12 Water Bodies and Associated Plants - Shallow Scrape
LE 1.32 Species Rich Annual Wildflower Grassland	LE 2.4 Linear Belt of Shrubs and Trees	LE 1.31 Species Rich Annual Wildflower Grassland	Hedges (LE 4)	LE 6.2 Banks and Ditches
LE 1.4 Rock and Scree		LE 1.32 Species Rich Annual Wildflower Grassland	LE 4.3 Native Species Hedge (untrimmied)	LE 6.21 Banks and Ditches - High Tide Roost Features
		LE 1.4 Rock and Scree	LE 4.4 Native Hedgerow With Trees	Earthworks
				Proposed Contours

LE 8.1 Open Mosaic Habitat	Noise (E 1)	LE 8.7 Nitrogen Deposition (NDEP) Compensation Area	Ecological (E 3)
LE 8.2 Ancient Woodland Compensation Planting	E 1.2 Acoustic Barrier-Built Elements (typically inc. highway boundary fence)	LE 8.3 Woodland Mitigation Planting	E 3.2 Ecological Habitat Creation and Receptor sites for Protected Species
LE 8.4 Wetland / Fenland Creation	Water (E 2)	LE 8.5 Ecology Pond (indicative symbol only)	E 1.2 Acoustic Barrier-Built Elements (typically inc. highway boundary fence)
LE 8.6 Acid Grassland Soil Salvage	Flood Compensation Areas (E 2-FCA)	LE 8.6 Acid Grassland Soil Salvage	E 3.2 Ecological Fencing (inc. highway boundary fence)
	Flood Defence (E 2-FD)		E 3.2 Ecological Fencing (inc. highway boundary fence)

E 3.2 Ecological Fencing (inc. highway boundary fence)	E 3.2 Ecological Fencing (inc. highway boundary fence)
E 3.2 Ecological Fencing (inc. highway boundary fence)	E 3.2 Ecological Fencing (inc. highway boundary fence)
E 3.2 Ecological Fencing (inc. highway boundary fence)	E 3.2 Ecological Fencing (inc. highway boundary fence)
E 3.2 Ecological Fencing (inc. highway boundary fence)	E 3.2 Ecological Fencing (inc. highway boundary fence)

Client: national highways

Project: LOWER THAMES CROSSING

Status: DCO Examination

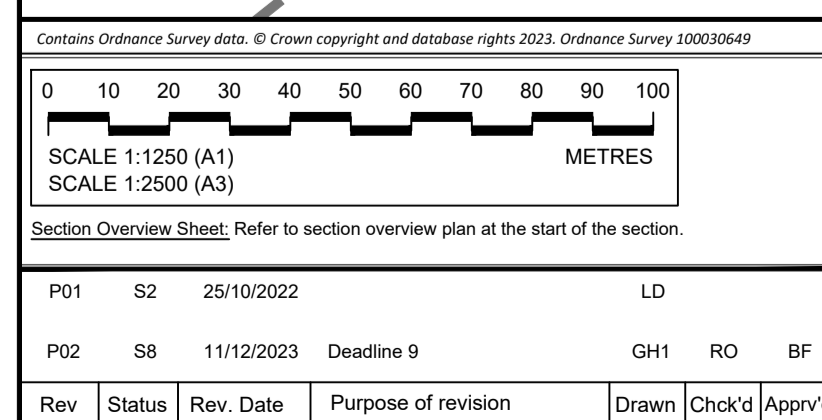
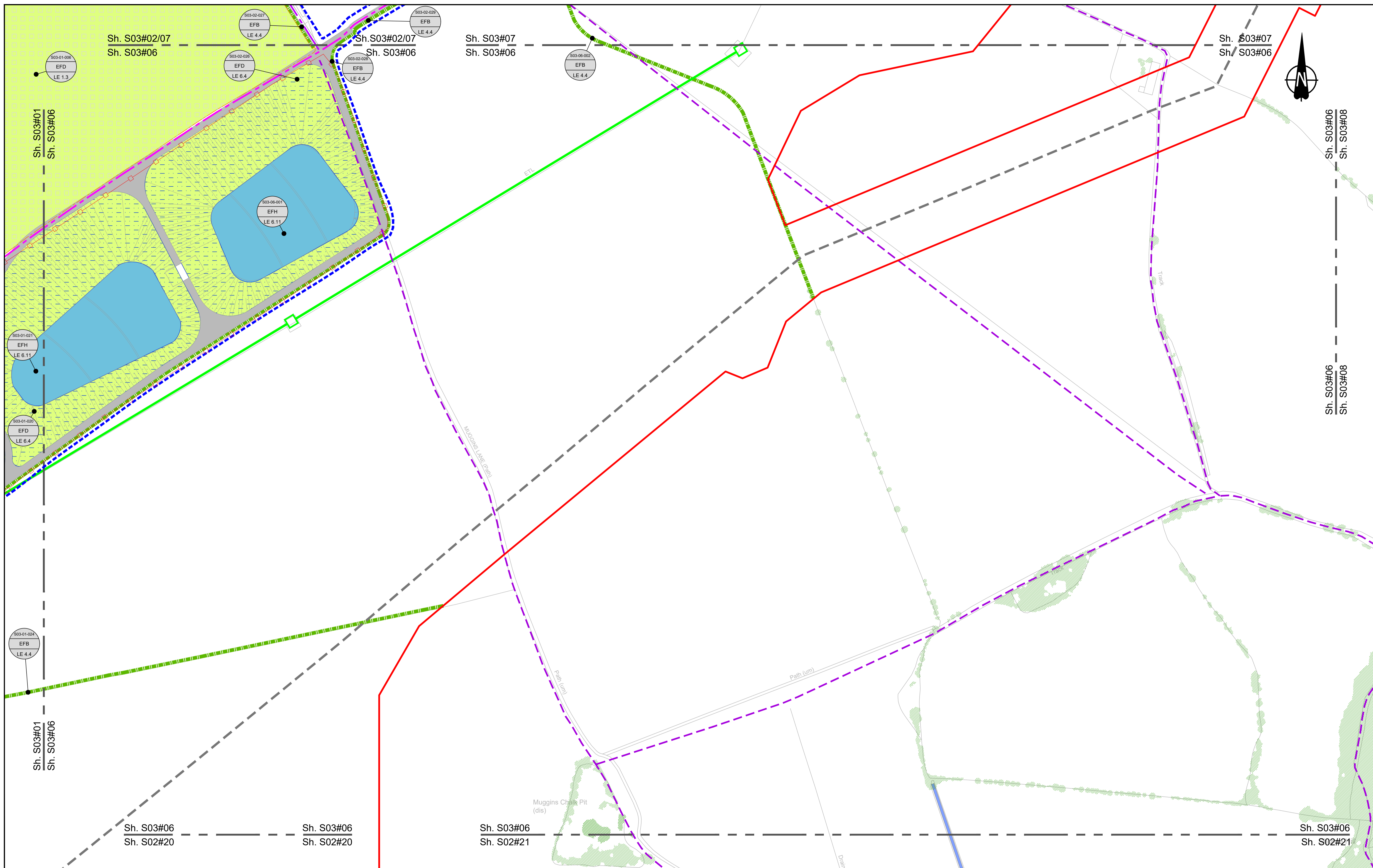
Application Document Number: TR010032/APP/6.2

Drawing title: ENVIRONMENTAL MASTERPLAN SECTION 3 SHEET 5

Drawing Number: HE540039-CJV-EGN-S03_EN000000_Z-DR-ZZ-00006

Original Size: A1, Scale: 1:1250

Revision: P02



Environmental Mitigation Legend: Refer to Main Legend for baseline and scheme features (Dwg: HE540039-CJV-EGN-SZZ_EN000000_Z-DR-ZZ-00001).

Order Limits	Planting (LE 2)	Individual Trees (LE 5)
Order Limits	LE 2.1 Woodland	LE 5.1 Individual Trees
Permanent Acquisition of Land	LE 2.11 Woodland With Non-Native Species	Wetland Habitats (LE 6)
Grassland (LE 1)	LE 2.14 Wet / Carr Woodland	LE 6.1 Water Bodies - Standing Water
LE 1.3 Species Rich Grassland	LE 2.2 Woodland Edge	LE 6.21 Marsh and Wet Grassland - Coastal Grazing Marsh
LE 1.31 Species Rich Chalk Grassland	LE 2.22 Scrub Woodland	LE 6.2 Wet Grassland
LE 1.32 Species Rich Annual Wildflower Grassland	LE 2.4 Linear Belt of Shrubs and Trees	Hard Landscape Features (LE 7)
LE 1.4 Rock and Scree		LE 7.4 Reinforced Earth Bund
		Earthworks
		Proposed Contours

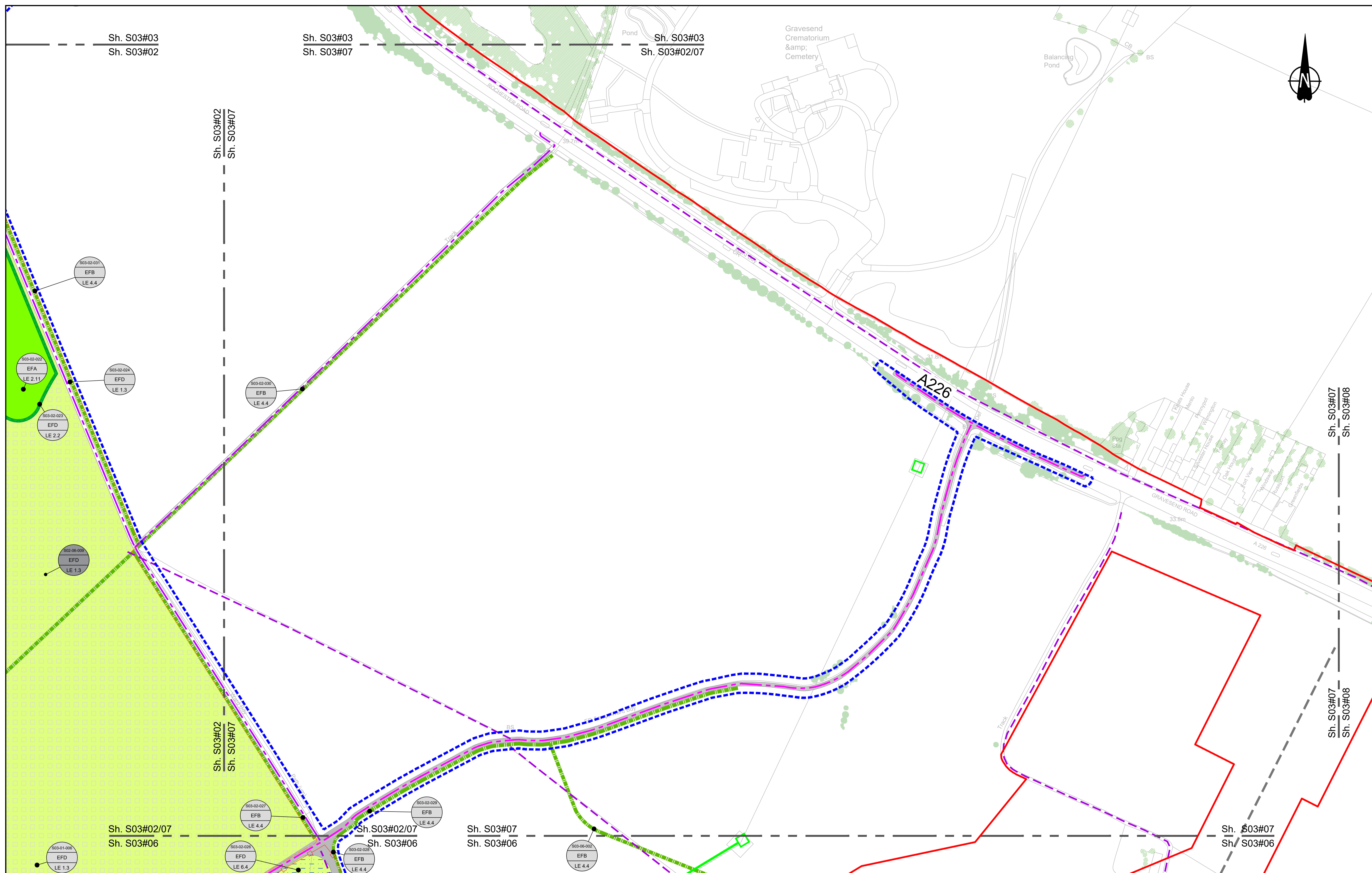
Ecological Habitats (LE 8)	Noise (E 1)	Water (E 2)
LE 8.1 Open Mosaic Habitat	LE 8.7 Nitrogen Deposition (NDEP) Compensation Area	E 2.1 Acoustic Barrier-Built Elements (typically inc. highway boundary fence)
LE 8.2 Ancient Woodland Compensation Planting	E 1.2 Acoustic Barrier-Built Elements (typically inc. highway boundary fence)	Flood Compensation Areas (E 2-FCA)
LE 8.3 Woodland Mitigation Planting		Flood Defence (E 2-FD)
LE 8.4 Wetland / Fenland Creation		
LE 8.5 Ecology Pond (indicative symbol only)		
LE 8.6 Acid Grassland Soil Salvage		

Ecological (E 3)	E 3.2 Ecological Fencing (inc. highway boundary fence)
E 3.2 Ecological Habitat Creation and Receptor sites for Protected Species	E 3.2 Ecological Fencing (inc. highway boundary fence)
E 3.2 Dormouse Boxes	E 3.2 Bat Owl Box
E 3.2 Bat Boxes	E 3.2 Bat Boxes
E 3.2 Ecological Culvert	E 3.2 Bat Block
E 3.2 Bat Barn Block	

Client: **national highways**

Project: **LOWER THAMES CROSSING**

Status: DCO Examination	Original Size: A1	Revision: P02
Application Document Number: TR010032/APP/6.2	Scale: 1:1250	
Drawing title: ENVIRONMENTAL MASTERPLAN SECTION 3 SHEET 6		
Drawing Number: HE540039-CJV-EGN-S03_EN000000_Z-DR-ZZ-00007		



Sh. S03#03
Sh. S03#02

Sh. S03#03
Sh. S03#07

Sh. S03#03
Sh. S03#02/07

Sh. S03#02
Sh. S03#07

Sh. S03#07
Sh. S03#08

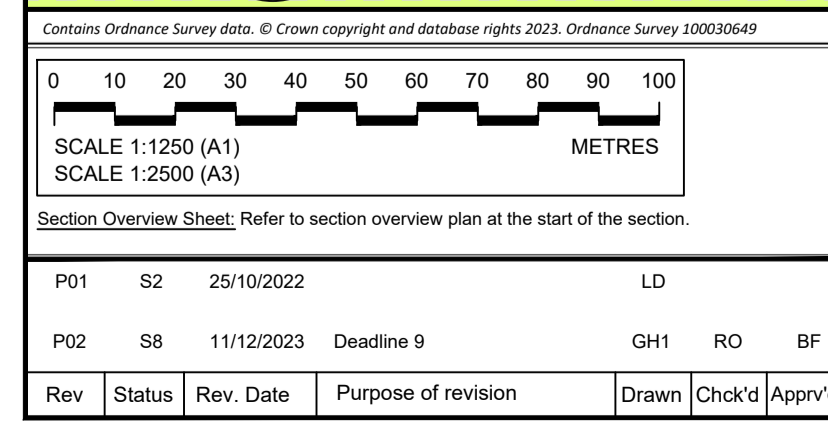
Sh. S03#07
Sh. S03#08

Sh. S03#02/07
Sh. S03#06

Sh. S03#02/07
Sh. S03#06

Sh. S03#07
Sh. S03#06

Sh. S03#07
Sh. S03#06



Environmental Mitigation Legend: Refer to Main Legend for baseline and scheme features (Dwg: HE540039-CJV-EGN-SZZ_EN000000_Z-DR-ZZ-00001).

	Order Limits		Planting (LE 2)		Individual Trees (LE 5)
	Grassland (LE 1)		Wetland Habitats (LE 6)		Hedges (LE 4)
	Ecological Habitats (LE 8)		Hard Landscape Features (LE 7)		Earthworks
	Noise (LE 1)		Water (LE 2)		Ecological (E 3)

	Noise (LE 1)		Water (LE 2)		Ecological (E 3)
	Noise (LE 1)		Water (LE 2)		Ecological (E 3)

Client:

Project: LOWER THAMES CROSSING

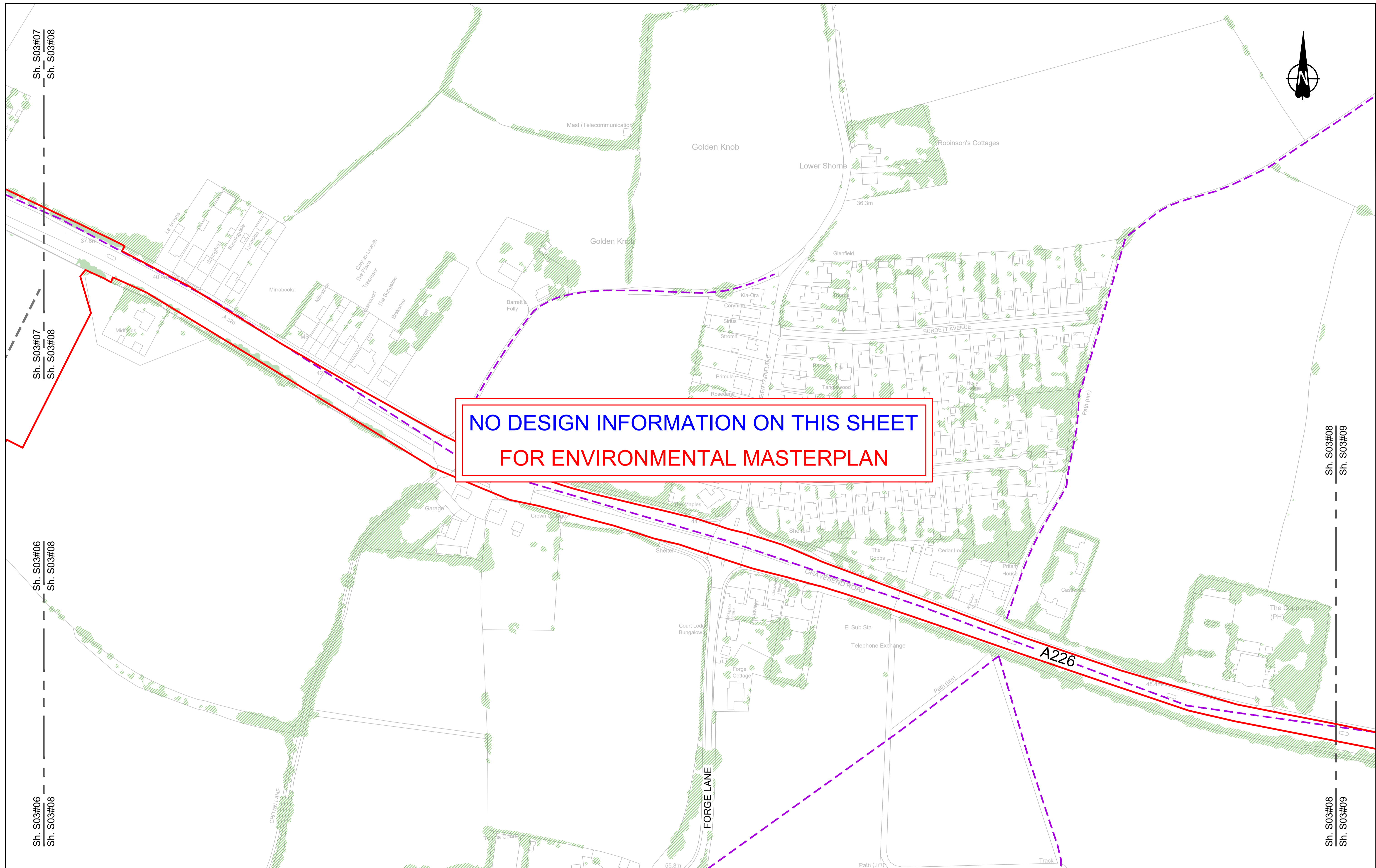
Status: DCO Examination

Application Document Number: TR010032/APP/6.2

Drawing title: ENVIRONMENTAL MASTERPLAN SECTION 3 SHEET 7

Drawing Number: HE540039-CJV-EGN-S03_EN000000_Z-DR-ZZ-00008

Original Size: A1, Scale: 1:1250, Revision: P02



NO DESIGN INFORMATION ON THIS SHEET
FOR ENVIRONMENTAL MASTERPLAN

Contains Ordnance Survey data. © Crown copyright and database rights 2023. Ordnance Survey 100030649

0 10 20 30 40 50 60 70 80 90 100 METRES

SCALE 1:1250 (A1)
SCALE 1:2500 (A3)

Section Overview Sheet: Refer to section overview plan at the start of the section.

P01	S2	25/10/2022	LD
P02	S8	11/12/2023	Deadline 9
Rev	Status	Rev. Date	Purpose of revision
		Drawn	Check'd
		Apprv'd	

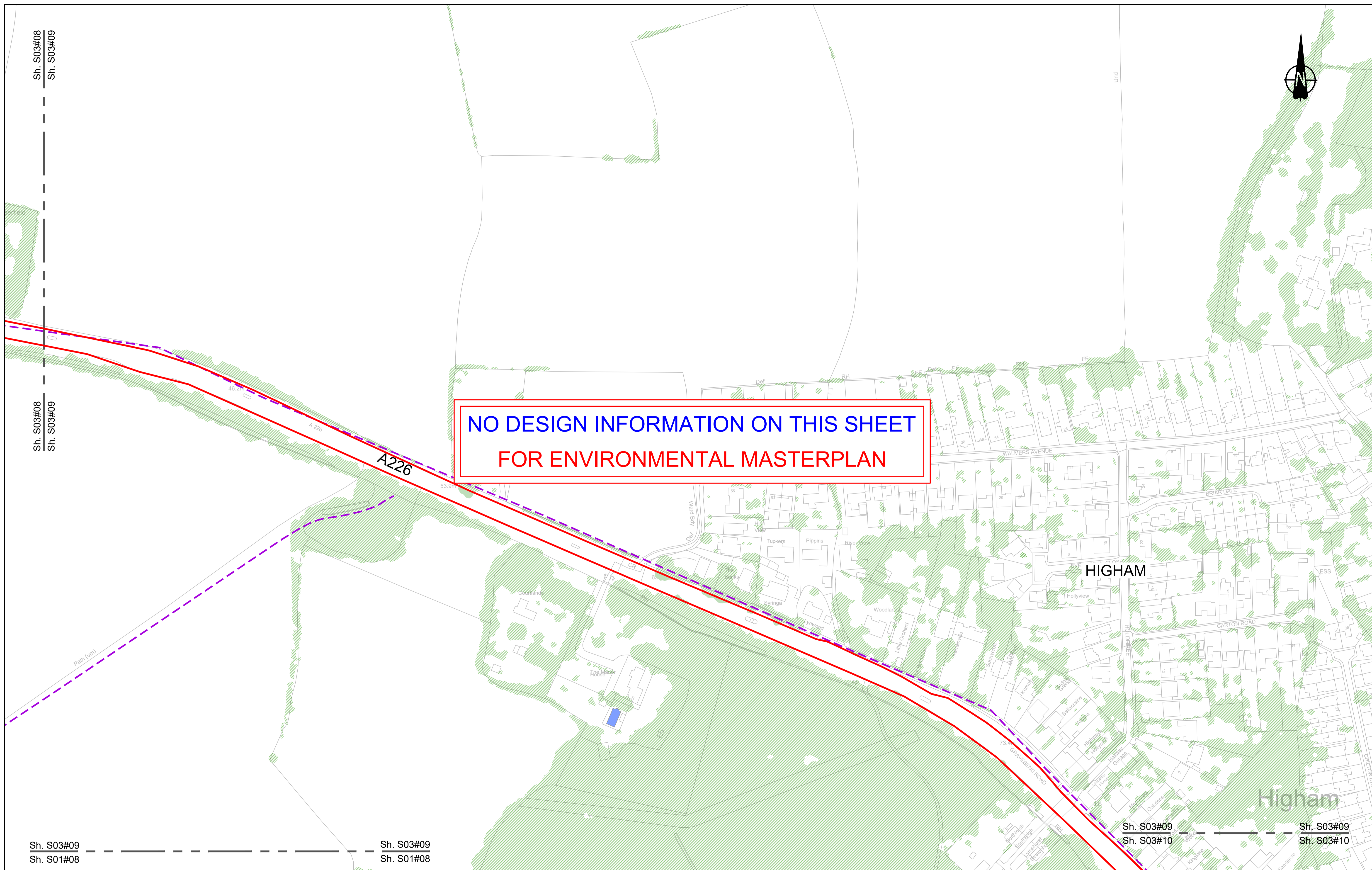
Environmental Mitigation Legend: Refer to Main Legend for baseline and scheme features (Dwg: HE540039-CJV-EGN-SZZ_EN000000_Z-DR-ZZ-00001).

<p>Order Limits</p> <ul style="list-style-type: none"> Permanent Acquisition of Land <p>Grassland (LE 1)</p> <ul style="list-style-type: none"> LE 1.3 Species Rich Grassland LE 1.31 Species Rich Chalk Grassland LE 1.32 Species Rich Annual Wildflower Grassland LE 1.4 Rock and Scree 	<p>Planting (LE 2)</p> <ul style="list-style-type: none"> LE 2.1 Woodland LE 2.11 Woodland With Non-Native Species LE 2.14 Wet / Carr Woodland LE 2.2 Woodland Edge LE 2.22 Scrub Woodland LE 2.4 Linear Belt of Shrubs and Trees <p>Hedges (LE 4)</p> <ul style="list-style-type: none"> LE 4.3 Native Species Hedge (untrimm'd) LE 4.4 Native Hedgerow With Trees 	<p>Individual Trees (LE 5)</p> <ul style="list-style-type: none"> LE 5.1 Individual Trees <p>Wetland Habitats (LE 6)</p> <ul style="list-style-type: none"> LE 6.11 Water Bodies - Standing Water LE 6.12 Water Bodies and Associated Plants - Shallow Scrape LE 6.2 Banks and Ditches LE 6.21 Banks and Ditches - High Tide Root Features 	<p>Ecological Habitats (LE 8)</p> <ul style="list-style-type: none"> LE 8.1 Open Mosaic Habitat LE 8.2 Ancient Woodland Compensation Planting LE 8.3 Woodland Mitigation Planting LE 8.4 Wetland / Fenland Creation LE 8.5 Ecology Pond (indicative symbol only) LE 8.6 Acid Grassland Soil Salvage 	<p>Ecological (E 3)</p> <ul style="list-style-type: none"> E 3.2 Ecological Habitat Creation and Receptor sites for Protected Species E 3.2 Dormouse Boxes E 3.2 Bat Boxes E 3.2 Ecological Culvert E 3.2 Bat Barn Block 	<p>Noise (E 1)</p> <ul style="list-style-type: none"> E 1.2 Acoustic Barrier-Built Elements (typically inc. highway boundary fence) <p>Water (E 2)</p> <ul style="list-style-type: none"> Flood Compensation Areas (E 2-FCA) Flood Defence (E 2-FD) 	<p>Hard Landscape Features (LE 7)</p> <ul style="list-style-type: none"> LE 7.4 Reinforced Earth Bund <p>Earthworks</p> <ul style="list-style-type: none"> Proposed Contours 	<p>Ecological (E 3)</p> <ul style="list-style-type: none"> E 3.2 Ecological Fencing (inc. highway boundary fence) E 3.2 Barn Owl Box
--	---	---	--	--	--	--	---

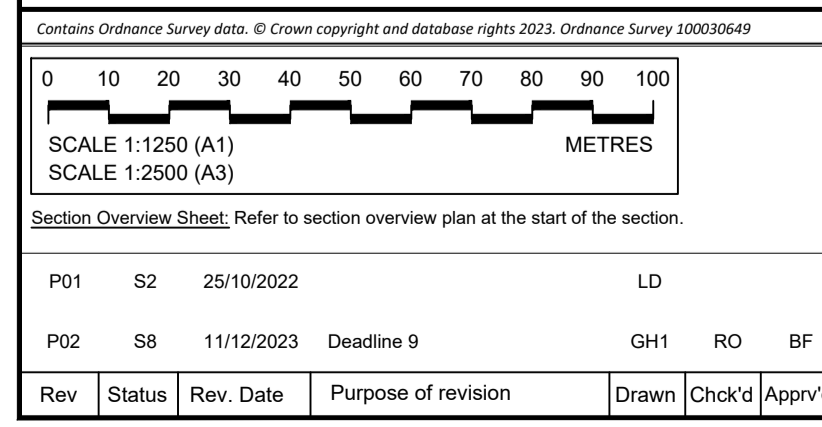
Client: national highways

Project: LOWER THAMES CROSSING

Status	DCO Examination	Original Size	A1	Revision	P02
Application Document Number	TR010032/APP/6.2	Scale	1:1250		
Drawing title	ENVIRONMENTAL MASTERPLAN SECTION 3 SHEET 8				
Drawing Number	HE540039-CJV-EGN-S03_EN000000_Z-DR-ZZ-00009				



NO DESIGN INFORMATION ON THIS SHEET
FOR ENVIRONMENTAL MASTERPLAN



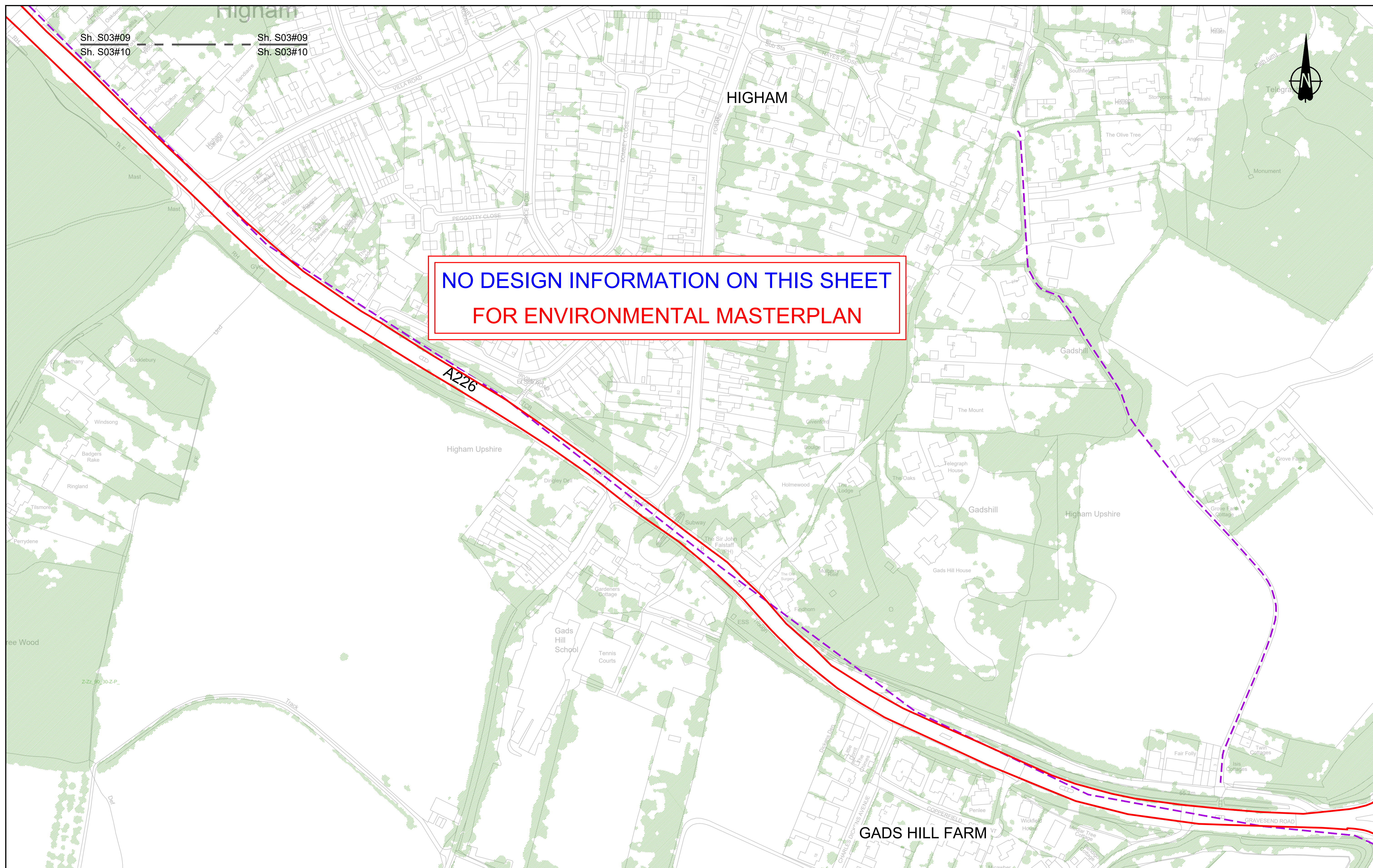
Environmental Mitigation Legend: Refer to Main Legend for baseline and scheme features (Dwg: HE540039-CJV-EGN-SZZ_EN000000_Z-DR-ZZ-00001).	
Order Limits	Planting (LE 2)
Permanent Acquisition of Land	LE 2.1 Woodland
Grassland (LE 1)	LE 2.11 Woodland With Non-Native Species
LE 1.3 Species Rich Grassland	LE 2.14 Wet / Carr Woodland
LE 1.31 Species Rich Chalk Grassland	LE 2.2 Woodland Edge
LE 1.32 Species Rich Annual Wildflower Grassland	LE 2.22 Scrub Woodland
LE 1.4 Rock and Scree	LE 2.4 Linear Belt of Shrubs and Trees
LE 2.5 Shrubs With Intermittent Trees	LE 2.7 Scattered Trees
LE 2.8 Scrub / Scattered Scrub	Hedges (LE 4)
LE 2.8 Native Species Hedge (untrimmed)	LE 4.3 Native Species Hedge (untrimmed)
LE 2.8 Native Hedgerow With Trees	LE 4.4 Native Hedgerow With Trees
LE 5.1 Individual Trees	Wetland Habitats (LE 6)
LE 6.11 Water Bodies - Standing Water	LE 6.12 Water Bodies and Associated Plants - Shallow Scrape
LE 6.2 Banks and Ditches	LE 6.2 Banks and Ditches - High Tide Roost Features
LE 6.4 Wet Grassland	LE 6.41 Marsh and Wet Grassland - Coastal Grazing Marsh
LE 6.41 Marsh and Wet Grassland - Coastal Grazing Marsh	Hard Landscape Features (LE 7)
LE 7.4 Reinforced Earth Bund	Earthworks
LE 8.1 Open Mosaic Habitat	Proposed Contours
LE 8.2 Ancient Woodland Compensation Planting	LE 8.7 Nitrogen Deposition (NDEP) Compensation Area
LE 8.3 Woodland Mitigation Planting	Noise (E 1)
LE 8.4 Wetland / Fenland Creation	E 1.2 Acoustic Barrier-Built Elements (typically inc. highway boundary fence)
LE 8.5 Ecology Pond (indicative symbol only)	Water (E 2)
LE 8.6 Acid Grassland Soil Salvage	Flood Compensation Areas (E 2-FCA)
	Flood Defence (E 2-FD)
	E 3.2 Ecological Habitat Creation and Receptor sites for Protected Species
	E 3.2 Dormouse Boxes
	E 3.2 Bat Boxes
	E 3.2 Ecological Culvert
	E 3.2 Bat Barn Block
	E 3.2 Ecological Fencing (inc. highway boundary fence)
	E 3.2 Barn Owl Box

Client

Project

LOWER THAMES CROSSING

Status	DCO Examination	Original Size	A1	Revision	P02
Application Document Number	TR010032/APP/6.2	Scale	1:1250		
Drawing title	ENVIRONMENTAL MASTERPLAN SECTION 3 SHEET 9				
Drawing Number	HE540039-CJV-EGN-S03_EN000000_Z-DR-ZZ-00010				



Sh. S03#09
Sh. S03#10

**NO DESIGN INFORMATION ON THIS SHEET
FOR ENVIRONMENTAL MASTERPLAN**

A226

GADS HILL FARM

Contains Ordnance Survey data. © Crown copyright and database rights 2023. Ordnance Survey 100030649

SCALE 1:1250 (A1)
SCALE 1:2500 (A3)

Section Overview Sheet. Refer to section overview plan at the start of the section.

P01	S2	25/10/2022	LD
P02	S8	11/12/2023	Deadline 9
Rev	Status	Rev. Date	Purpose of revision
		Drawn	Chk'd
		Appr'd	

Environmental Mitigation Legend: Refer to Main Legend for baseline and scheme features (Dwg: HE540039-CJV-EGN-SZZ_EN000000_Z-DR-ZZ-00001).

Order Limits	Planting (LE 2)	Individual Trees (LE 5)
Permanent Acquisition of Land	LE 2.1 Woodland	LE 5.1 Individual Trees
Grassland (LE 1)	LE 2.11 Woodland With Non-Native Species	Wetland Habitats (LE 6)
LE 1.3 Species Rich Grassland	LE 2.14 Wet / Carr Woodland	LE 6.11 Water Bodies - Standing Water
LE 1.31 Species Rich Chalk Grassland	LE 2.2 Woodland Edge	LE 6.12 Water Bodies and Associated Plants - Shallow Scrape
LE 1.32 Species Rich Annual Wildflower Grassland	LE 2.22 Scrub Woodland	LE 6.2 Banks and Ditches
LE 1.4 Rock and Scree	LE 2.4 Linear Belt of Shrubs and Trees	LE 6.21 Banks and Ditches - High Tide Roost Features
	LE 2.5 Strubs With Intermittent Trees	LE 6.4 Wet Grassland
	LE 2.7 Scattered Trees	LE 6.41 Marsh and Wet Grassland - Coastal Grazing Marsh
	LE 2.8 Scrub / Scattered Scrub	Hard Landscape Features (LE 7)
	Hedges (LE 4)	LE 7.4 Reinforced Earth Bund
	LE 4.3 Native Species Hedge (untrimmed)	Earthworks
	LE 4.4 Native Hedgerow With Trees	Proposed Contours

Ecological Habitats (LE 8)	LE 8.7 Nitrogen Deposition (NDEP) Compensation Area	Ecological (E 3)
LE 8.1 Open Mosaic Habitat	LE 8.2 Ancient Woodland	E 3.2 Ecological Habitat Creation and Receptor sites for Protected Species
LE 8.3 Woodland Mitigation Planting	LE 8.4 Wetland / Fenland Creation	E 3.2 Dormouse Boxes
LE 8.5 Ecology Pond (indicative symbol only)	LE 8.6 Acid Grassland Soil Salvage	E 3.2 Bat Boxes
		E 3.2 Ecological Culvert
		E 3.2 Bat Barn Block
		E 3.2 Ecological Fencing (inc. highway boundary fence)
		E 3.2 Barn Owl Box

Noise (E 1)	LE 1.2 Acoustic Barrier-Built Elements (typically inc. highway boundary fence)	Water (E 2)
LE 1.1 Flood Compensation Areas (E 2-FCA)	LE 1.2 Acoustic Barrier-Built Elements (typically inc. highway boundary fence)	E 2.1 Flood Compensation Areas (E 2-FCA)
LE 1.3 Flood Defence (E 2-FD)		E 2.2 Flood Defence (E 2-FD)

Client

Project

LOWER THAMES CROSSING

Status	DCO Examination	Original Size	A1	Revision	P02
Application Document Number	TR010032/APP/6.2	Scale	1:1250		
Drawing title	ENVIRONMENTAL MASTERPLAN SECTION 3 SHEET 10				
Drawing Number	HE540039-CJV-EGN-S03_EN000000_Z-DR-ZZ-00011				

If you need help accessing this or any other National Highways information, please call **0300 123 5000** and we will help you.

© Crown copyright 2023.

You may re-use this information (not including logos) free of charge in any format or medium, under the terms of the Open Government Licence. To view this licence:

visit www.nationalarchives.gov.uk/doc/open-government-licence/

write to the **Information Policy Team, The National Archives, Kew, London TW9 4DU**, or email psi@nationalarchives.gsi.gov.uk.

Mapping (where present): © Crown copyright and database rights 2023 OS 100030649. You are permitted to use this data solely to enable you to respond to, or interact with, the organisation that provided you with the data. You are not permitted to copy, sub-licence, distribute or sell any of this data to third parties in any form.

If you have any enquiries about this publication email info@nationalhighways.co.uk or call **0300 123 5000**.*

*Calls to 03 numbers cost no more than a national rate call to an 01 or 02 number and must count towards any inclusive minutes in the same way as 01 and 02 calls.

These rules apply to calls from any type of line including mobile, BT, other fixed line or payphone. Calls may be recorded or monitored.

Printed on paper from well-managed forests and other controlled sources when issued directly by National Highways.

Registered office Bridge House, 1 Walnut Tree Close, Guildford GU1 4LZ

National Highways Limited registered in England and Wales number 09346363